

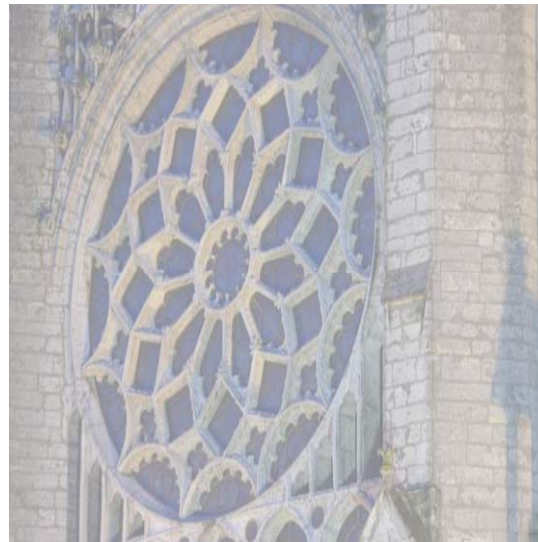


LOCATION:

GilChrist Retreat Center
56265 Day road
Three Rivers, MI 49093
Phone: 269-244-1130
GilChrist@Fetzer.org

GilChrist is located approximately 7 miles west of three Rivers, Michigan on Day Road. Three Rivers is approximately 25 miles south of Kalamazoo, Michigan at I-94 and 35 miles north of the Indiana Turnpike off US 131.

To reach GilChrist take Hoffman Road west from US 131 for approximately 6 & 9/10 miles to Day Road (at stop sign). Turn north on Day road and travel about 7/10 of a mile to the entrance of GilChrist which is adjacent to the caretaker's residence at 56265 Day Road.



The Center for Jungian Studies

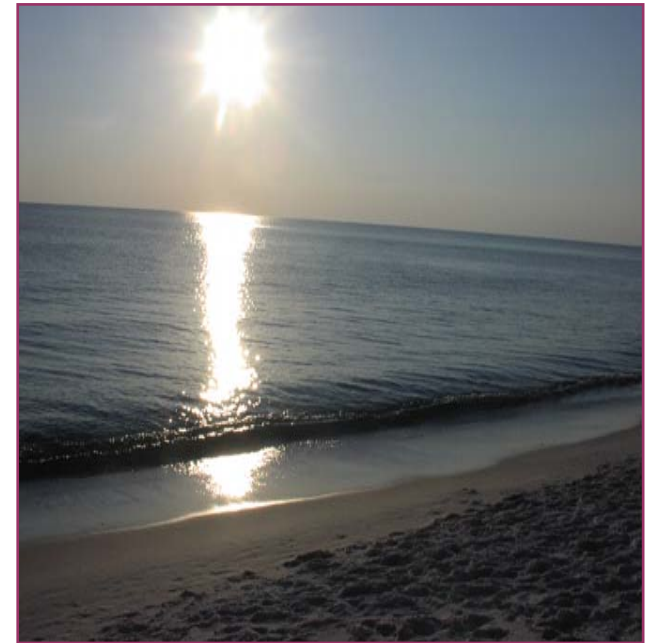
105 East Jefferson Blvd.
Suite 500
South Bend, IN 46601
Phone (574) 232-4453
Fax (574) 232-7718

drsibilla@centerforjungianstudies.com

www.centerforjungianstudies.com

The Value of *Silence*:

A Jungian Approach to Contemplation



A Contemplative Retreat

MAY 28 – 30, 2010

RETREAT DESCRIPTION

Dr. C. G. Jung developed many of his seminal ideas of the psyche while at his home in Bollingen- a stone castle-like retreat that he had built on the shores of Lake Zurich in Switzerland without any modern conveniences and some distance from any metropolitan area. He lived at Bollingen for weeks at a time in silence with very few visitors or interruptions to his contemplation, inner work and writing.



This contemplative retreat seeks to foster a similar experience of solitude and inner quiet. Through utilization of didactic and experiential exercises the retreatant is invited to come to know psyche in a manner not usually possible within the traditional classroom setting. In particular, this weekend will focus on an introduction to psyche as understood by C. G. Jung with an emphasis on the use of silence and contemplation for one's inner growth and spiritual development. The group will meet as a whole at various intervals throughout the day/evening to discuss the material as well as one's experiences as a retreatant. Aside from our time in classroom discussion, each retreatant will be asked to maintain silence throughout the duration of the retreat.

PARTICULARS

The retreat will take place at GilChrist Retreat Center in Three Rivers Michigan. GilChrist is situated on 67 acres of wooded land and rolling prairie. There is a small stone chapel equipped with a fireplace as well as a very large walking labyrinth cut into a grove of wild flowers. One will also find seven faith gardens honoring various faith traditions of the world uniquely carved into the landscape. Our discussions will take place in the main building in a beautifully large great room also equipped with a fireplace, a loft room for meditation, a library, and other rooms for quiet contemplation and solitude.



The retreat runs from Friday afternoon through Sunday at noon. Each retreatant will stay in their own hermitage that has a family room, large kitchen (stove, refrigerator, pots/pans and all dishes), full bathroom, and single bedroom. Each hermitage also has a small walk-out porch and is situated in a wooded grove to help maintain the retreatants' privacy and serenity.

One's breakfast and lunch will be of their own choosing in their own hermitage. We will observe one communal meal in the evening that will be catered for us and served in the main building.



The cost for the weekend is \$220.00 which includes your hermitage, full use of all GilChrist facilities, the evening communal meal as well as participation in all lectures. A deposit of \$100.00 is necessary to secure one's reservation.

FACILITATOR

Dr. Warren Sibilla is a Jungian psychoanalyst, clinical psychologist and director of The Center for Jungian Studies in South Bend, IN where he maintains a private practice in Jungian analysis and clinical psychology. Please feel welcome to contact Dr. Sibilla for any additional information you require or questions you may have.

